

**Robert Whitworth**  
**My Journey into Animatronics**  
**May 19th, 8:30 to 12:30**

Robert will be talking about his personal history in the woodworking field. From his snap together, giant insects to his adventure into Animatronics. As a longtime member of BAWA, he has a unique perspective on the past and interesting thoughts about how woodturning changes over time.

Robert has some unique talents that go beyond woodturning, he has incorporated metal turning and unique ways of putting his pieces together. The photos speak for themselves, some of the items he makes may even open your eyes to a new skill or two that you may want to learn.

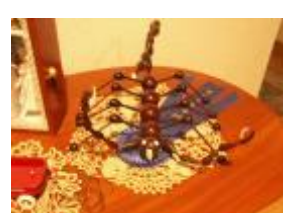
Robert's perspective on the club goes back a long way, as a man who served on the BAWA board for more than 11 years, and worked in several mediums, I am sure you will find what he has to say is informative and interesting. During the breaks, please introduce yourself to Robert, another member who is great to talk to. Asking about his adventure into Animatronics, or small robot-like machines made out of wood that has been turned on a lathe is something I learned first-hand with a visit to his home last month. It was delightful to see him turn on the batteries and watch everything move.

There are cars, people and machines that catch your imagination and cause all of us to wonder, how did he do that and can I make something that moves like Robert does.

Our meeting will not have a turning demo but the story of Robert as he journeys through the turning world to a place he loves. As he turns the power on the pieces they take on a life of their own. There will be lots of stuff to see and touch, visual machines to watch and wonder about and a good story to go with it.

I think you will find this meeting unique. There will be items on all the tables in front of the room, lots of time to watch everything work.

We hope you will join us for this journey in May. It is a short day, starting at 8:30 AM and ending at 12:30 AM.





# BAY AREA WOODTURNERS ASSOCIATION

A CALIFORNIA NONPROFIT CORPORATION  
LOCAL CHAPTER AAW

## Club Meetings

Meetings are the 2nd Saturday of each month unless otherwise noted.

8:30 doors open for setup, use store and library, swap ideas, view displays

9:00—12:30 meeting and demo

**Meetings will be held at the PHEC Woodturning Center, 1 Santa Barbara Road, Pleasant Hill, CA.**

See [bayareawoodturners.org/](http://bayareawoodturners.org/) for directions and club information.

### **BAWA Officers Meeting -**

Officer meetings are open to all members. Contact John Cobb at: [president@bayareawoodturners.org](mailto:president@bayareawoodturners.org) if you would like to be on the agenda.

## 2018 Event Schedule

May 19th	Robert Whitworth (Note change to 3rd Saturday) 8:30-12:30
June 9th	Mike Budesilich & Jay Holland 8:30-12:30
June 14-17	AAW Woodturning Symposium Portland, Oregon
July 14th	Turn for Troops 8:30 - 12:30
Aug 5th	Summer Picnic & Tool Swap (Sunday) 11:00-2:00
Sept 8th	Sam Angelo 8:30-4:00

The Bay Area Woodturners Association is a local chapter of the American Association of Woodturners. Our purpose is to provide a meeting place for local turners to share ideas and techniques and to educate the general public regarding the art of turning. The Association usually meets the second Saturday of each month. The Association periodically sponsors exhibitions and demonstrations by local and internationally known turners.

President  
John Cobb  
[president@bayareawoodturners.org](mailto:president@bayareawoodturners.org)

Vice President  
Dave Bentley  
[vp@bayareawoodturners.org](mailto:vp@bayareawoodturners.org)

Secretary  
Anna Duncan  
[secretary@bayareawoodturners.org](mailto:secretary@bayareawoodturners.org)

Treasurer  
Peter Wolff  
[treasurer@bayareawoodturners.org](mailto:treasurer@bayareawoodturners.org)

Member at Large  
Kim Wolfe  
[memberatlarge@bayareawoodturners.org](mailto:memberatlarge@bayareawoodturners.org)

President Emeritus  
Joel Albert  
[cobbemail@gmail.com](mailto:cobbemail@gmail.com)

Pleasant Hill Adult Education (PHAE) Liaison  
Jim Rodgers  
[Jlrogers236@comcast.net](mailto:Jlrogers236@comcast.net)

Librarian  
Cindy Navarro  
[librarian@bayareawoodturners.org](mailto:librarian@bayareawoodturners.org)

Membership  
Hugh Bevin-Thomas & Karen Rice  
[membership@bayareawoodturners.org](mailto:membership@bayareawoodturners.org)

Store Manager  
Richard Kalish & Michele Freeze  
[storemanager@bayareawoodturners.org](mailto:storemanager@bayareawoodturners.org)

Webmaster  
Jeff Tanner & Greg Ketel  
[webmaster@bayareawoodturners.org](mailto:webmaster@bayareawoodturners.org)

Newsletter Editor  
Louie Silva  
[newslettereditor@bayareawoodturners.org](mailto:newslettereditor@bayareawoodturners.org)

Video Coordinator  
Dave Bentley, Larry Batti & Ed Steffenger  
[videocoordinator@bayareawoodturners.org](mailto:videocoordinator@bayareawoodturners.org)

Woodmeister  
Steve Griswold  
[woodmeister@bayareawoodturners.org](mailto:woodmeister@bayareawoodturners.org)

Educational Coordinator  
Jan Blumer  
[educationalcoordinator@bayareawoodturners.org](mailto:educationalcoordinator@bayareawoodturners.org)

Pro Demonstrator Liaison  
John Cobb  
[Cobbemail@gmail.com](mailto:Cobbemail@gmail.com)

Staff Photographer  
Rick Dietrich

Social Coordinator  
TBA

## John Jordan Presentation on April 14, 2018

John gave a very enjoyable presentation on April 14, 2018 that included an explanation of how to position the wood you are turning to get the best-looking project you can have. He included drawings, talked about turning end grain and maximizing the use of the look of the sap wood in a piece. During his presentation he showed how he could adjust a piece after the initial turning to re-center the sap wood.



John can turn and talk without missing a step, his narrative was clear, concise and interesting. Very shortly we will have a video on the members video site where you can see the John Jordan presentation if you missed it or see it again or skip through it and find the specific part that you would like to review. John also has other videos on YouTube for your viewing pleasure.

John has taught thousands of people the art of woodturning. To me his strong suit is knowing the wood he is turning and getting the most from each piece. His philosophy is simple and down to earth.

The instructions on the carved hollow form that John demonstrated can be found at "johnjordanwoodturning.com". The website also has more information about John, his yearly calendar, tech articles, links to schools and associations he is a member of and Museums where his pieces are on display.

If you have time, please look at his web site. He does much more than just turn carved hollow forms.

**A special thank you to Dave and Sally Morris from our club for hosting John while he was here.**



Roughing Cuts  
with Bowl Gouge



Shear Scraping



Drilling  
Depth Hole



Professor Jordan's  
math lesson



Hollow Form  
Securely



More Shear Scrap-  
ing of Bottom



Hollow Form  
Demo



Draws Layout  
Lines



Carving  
V-Groove



BAWA Members are Spellbound



Widening  
V-Groove



## President's Chatter

*May 2018*

Twist and Spin

It's official, the president's challenge for the August summer picnic is:

**Whose top can spin the longest?**

Members are encouraged to make a spinning top that is propelled by thumb and forefinger. There will be two categories:

1. Wood only (coloring is approved / encouraged)
2. Open - anything goes

We will provide a large wooden bowl or another appropriate surface as the competition pitch; contestants will be timed from the moment the top starts spinning to the point a side touches the ground. Awards will be given for the longest spinning top in each category as well as a few other acknowledgements for creativity. We will follow new 2018 Professional Top Spinners League rules, specifically no banned substances are allowed: including but not limited to steroids, HGH or STDs. Trash talking and "Yo Top is so ugly..." jokes are encouraged especially when a competitors top is spinning.

Now on to current business, Robert Whitworth will be returning to BAWA (where he was President) and show his amazingly creative turnings at this Saturday's meeting. Most of us have not been members long enough to have seen Robert's work, they are truly remarkable assemblies. Robert will probably be our most creative presenter this year, this is a meeting not to be missed.

Of course we will have the wood raffle after the meeting, our new woodmiester (Steve Grizwald) has been hard at work collecting all sorts of gems including Walnut if you want to make a John Jordan hollow vessel. Speaking of which, if you have a Jordan-ish hollow form, bring it in and we can compare notes during show-and-tell.

I look forward to seeing everyone on Saturday.

Keep turning.  
John Cobb  
President



## Mike Budesilich and Jay Holland Enhancements to Turned Pieces

June 9, 2018



Mike Budesilich and Jay Holland (a BAWA Member) will be presenting to our club. Together they will be presenting a unique way to embellish your woodturnings. The presentation will consist of the steps taken when carving a piece, turned pieces with unique twists in designs and the use of color.

Mike is the Carving Instructor at Mt. Diablo Adult School where he has taught for many years. Mike has won numerous first place awards in carving contests and has been commissioned on numerous occasions to create works of art for people. One of his most recent pieces was for the owner of a large cabin in Northern California showing the 4 native California fish, it was spectacular.

The carving classes, of which there are two, are held on Wednesday. There is an afternoon class that is typically filled with long-time carvers and a class in the early evening that is open to long time carvers as well and students who have a desire to develop their talents in the art of wood carving. Some of the people in the classes are woodturners who are looking for new ways to make their designs stand out.

Jay Holland is one of the people that has been, for many years, carving, using pyrography and color to make his turnings unique. He is also one of the people in the carving class who helps out new students and older students apply their carving talents to create stunning works of art. Jay has won numerous blue ribbons at Woodturners events as well as carving competitions.

This should be a fun meeting, with lots to see and touch. Almost all the items you will see have been turned on a lathe; a few of the pieces are not turned on a lathe but carved and worth seeing.

I hope you will join your fellow members at this meeting. The items discussed at this meeting blend the items learned the first half of the year with a way to help you make your own personal statement.



## CRAFT SUPPLIES 10% DISCOUNT ORDER

The 10% discount applies to any published price (including sale items, close-outs, etc.) on almost all items. Craft Supplies has a new catalog that includes new items with a different item numbering system. There have been some price increases as well so don't use old catalogs. If you don't have the latest catalog please look on-line to pick your loot and check prices and item numbers.

Orders are placed by filling out an electronic order form which is available on the BAWA website.  
E-mail the form to Dean Adkins (adkd@chevron.com) with all the requested information:

Member name, phone number and e-mail address  
Catalog item number  
Catalog page number  
Item description  
Quantity ordered  
List / sale price (before 10% discount)



You can call Dean (925-998-4111) to place an order, but must follow up with an e-mail to confirm all the required information.

## Rockler Helps BAWA Members

BAWA members receive a 10% discount when purchasing directly at the Concord Rockler Store at:

<http://www.rockler.com/retail/stores/ca/concord-store>.

Mention your BAWA membership when checking out, to receive your discount. Rockler also donates part of the proceeds back to the club which help support our Holiday Party raffle.



## Membership News

By Hugh Bevan-Thomas



### Membership Update

Our membership but has increased by one this month bringing our total to 139 active members.

Remember, if you have failed to renew your membership, it is never too late to be rescued from the delinquent pile!

## BAWA Classified Ads



We want members and others with items to sell or trade, services to render or if you're just looking to find a specific item from fellow BAWA members. Please send ads to Louie Silva at: [newslettereditor@bayareawoodturners.org](mailto:newslettereditor@bayareawoodturners.org)

You can't beat the price...FREE!!

## DON'T FORGET!

Bring some of that wood you have taking up space in your shop to share in our monthly raffle.



*April Show and Tell*



Harry Levin-  
Hollow Vessel



David Fleisig-  
Inlaid & Segmented Bowls



Dave Plemons-  
Bowls



Hugh Bevan-Thomas-  
Fluted Bowl



Vern Stovall-  
Hollow Vessel



Charlie Saul-  
Carved Vessels

*Continued on next page*

*April Show and Tell  
Cont.*



Anna Duncan-  
Ornaments



Gary Bingham-  
Boxes



Peter Twelker-  
Oak Burl Bowl



Jerry Jakubowski-  
Branded & Dyed Bowl



Andrew Baxter-  
Fluted Bowl



Steve Smyers-  
Inlaid Bowl

*Continued on next page*



## April Show and Tell Cont.



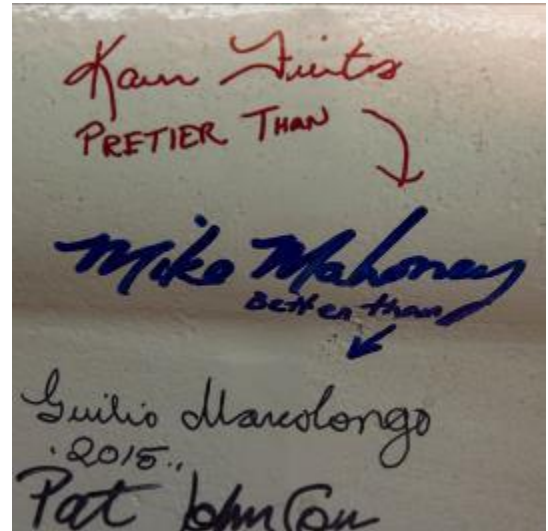
Bob Bean-  
Lighthouse Pepper Mill



Dennis Fisher-  
Root Stock &  
Square Rimmed Box



Harvey Klein-  
Walnut Candy Dish &  
Buckeye Ornament



Messages on BAWA Lathe  
Woodturners:  
Witty as well as talented

### Tips and Techniques



by Cindy Navarro

### Book Reviews

Cindy will be back next month

## AAW Video Tip



Copy and paste link below:

<https://vimeo.com/266004735>

## AAW Shop Tip

### Protect wood from chuck jaws

After trying several ideas for reversing a small turning and holding it in a chuck to finish the bottom, I devised my own method, which is simple and inexpensive. I had tried cloth, tape, foam, and electrical wire, but always ended up with marks on the turning from the chuck jaws. To solve this, I took some plastic tubing, which is available by the foot in a variety of sizes, and slid it on the chuck jaws.

For pin jaws I cut pieces the length of the jaws. For No. 2 jaws, I cut pieces long enough to cover each jaw. I cut a slit in the tubing so that it can slip over each jaw. The tubing is thick enough to prevent the marks and also provides some holding power for the work piece.

For pin jaws I use 5/8" (16 mm) ID tubing and for the No. 2 jaws, 3/8" (10 mm) ID tubing. Other chucks may require different sizes.

~ Bill Fordney, Pennsylvania

